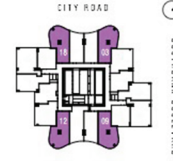
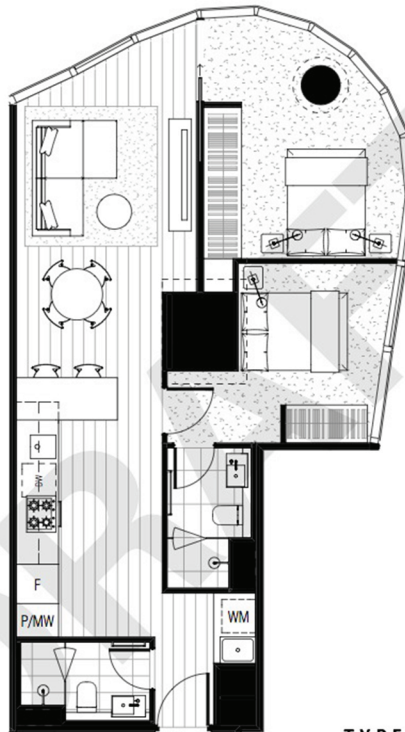


# AUSTRALIA108

MELBOURNE



**AUSTRALIA 108**  
MELBOURNE

**SKY  
RISE  
RESIDENCES**

**TYPE B1 - 2 BED + 2 BATH**

AREAS	INTERNAL	TOTAL
LEVEL 14-27	70.8 M <sup>2</sup> 762.1 ft <sup>2</sup>	70.8 M <sup>2</sup> 762.1 ft <sup>2</sup>
LEVEL 28-41	71.1 M <sup>2</sup> 765.3 ft <sup>2</sup>	71.1 M <sup>2</sup> 765.3 ft <sup>2</sup>
LEVEL 44-56	71.7 M <sup>2</sup> 771.8 ft <sup>2</sup>	71.7 M <sup>2</sup> 771.8 ft <sup>2</sup>
LEVEL 57-67	71.8 M <sup>2</sup> 772.8 ft <sup>2</sup>	71.8 M <sup>2</sup> 772.8 ft <sup>2</sup>

Whilst we endeavour to ensure the contents of these plans are correct at the time of printing, the information they contain is to be used as a guide only. The columns shown on the plans may vary in diameter throughout the Building. All areas are provided in accordance with the Method of Measurement for Residential Property provided by the Property Council of Australia. The plans were completed prior to the completion of final design, engineering and construction of the Building, therefore design, engineering, dimensions, fittings, finishes and specifications are subject to change without notice in accordance with the provisions of the Contract of Sale.



Soaring to 101 levels above the city, Australia 108 will be the tallest building in Melbourne and home to the tallest apartments in the Southern Hemisphere.

Comprising 1105 apartments from levels 11 through to Level 100 with 3 levels of resident facilities, the tower volume will rise from a 10 level externally planted podium car park volume over ground floor retail areas.

Victoria, Australia

70 Southbank Blvd, Southbank VIC 3006, Australia

 2  2  0

Price  
**AU\$ 812,500**

Unit No  
**3812**



021 2251 0288 | 08111 268 268

Sydney • Melbourne • Jakarta • Surabaya • Makassar

[www.centurionpg.com.au](http://www.centurionpg.com.au)